



67X-6RZ

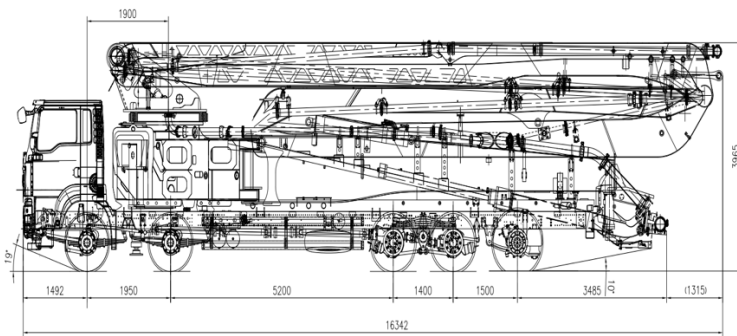
TRUCK-MOUNTED CONCRETE PUMP

Placing Boom	B6RZ 67
Driven By	Gearbox PTO
Chassis	5 Axles

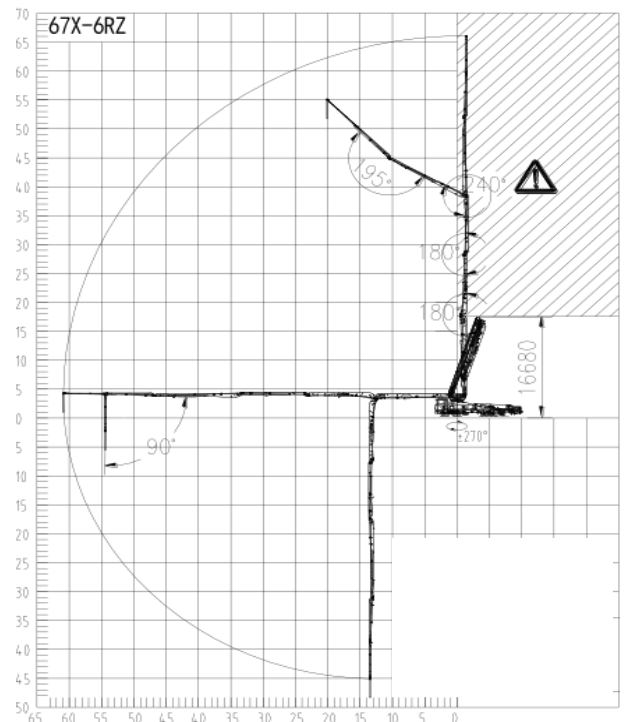
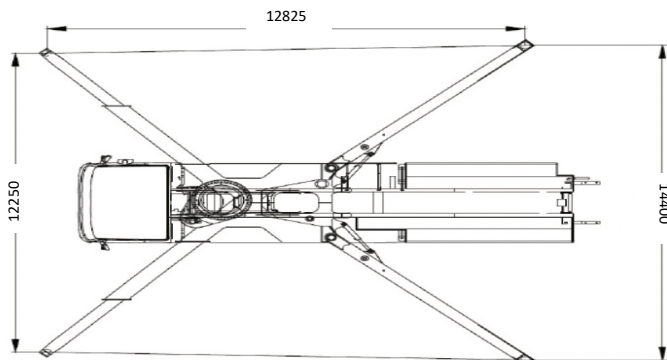


Dimensions, Reach Information Diagram, Support

67X-6RZ布料范围图



Dimensions varying according to truck assembly





67X-6RZ

TRUCK-MOUNTED CONCRETE PUMP

Placing Boom	B6RZ 67
Driven By	Gearbox PTO
Chassis	5 Axles

Main Feature

- Boom intelligent damping technology: The soft control of booms in starting, slewing and stopping reduces the impacting vibration of booms and therefore makes the vehicle operate more stably, reliably and safely.
- Accurate pumping control technology (APC): Great leap of pumping accuracy and adaptability, improving pump efficiency.
- Adaptive concrete material pumping technology: Improve pumping control system for poor concrete with segregation and big viscosity, and auto-adaptive pumping mode, reducing the block rate by more than 50%.
- Dual-pump and dual-loop hydraulic system: Less hydraulic impact, High efficiency, Low failure rate.
- Three-stage fault diagnosis: boot self-check, process self-check and shutdown detection is adopted to realize the overall control of the product's health condition.

Standard Equipment

- Compact in design, 67m pump mounted on 5-axles truck.
- Efficient pump unit, ideal for long time use.
- Agile placing boom with 6 arms with unfolding height 16.68m only, which gives a wide work range.
- Proportional radio controls with two speeds boom movement, automatic frequency scanner.
- Double thickness concrete pipes hardened.
- Centralized lubrication system for pumping unit.
- Hard carbide wear plate and cutting ring for PU pumping units.
- Fiberglass hopper covering.
- Use & Maintenance Manuals.
- Spare parts and service manual.

Optional

- Chassis Brand: Mercedes- Benz, Sinotruk, FAW and *et cetera*.
- Other configuration on demand.

Placing Boom Technical Data

Model		67X-6RZ	
Pipeline diameter	mm	125	
Maximum vertical reach	m	66.10	
Maximum horizontal distance (from center of slewing axis)	m	60.90	
Minimum unfolding height	m	16.68	
Section numbers	6		
1st section	Length	mm	13720
	Opening angle	90°	
2nd section	Length	mm	10470
	Opening angle	180°	
3rd section	Length	mm	10280
	Opening angle	180°	
4th section	Length	mm	13570
	Opening angle	240°	
5th section	Length	mm	7560
	Opening angle	195°	
6th section	Length	mm	6500
	Opening angle	90°	
Rotating angle	±270°		
End hose length	m	3	

Pumping Unit Technical Data

Max. theoretical output	m ³ /h	180
Max. pressure	MPa	11.30
Conc. cylinders (diam. x stroke)	mm	260 x 2100
Concrete hopper capacity	550	
Hydraulic circuit	Closed	

