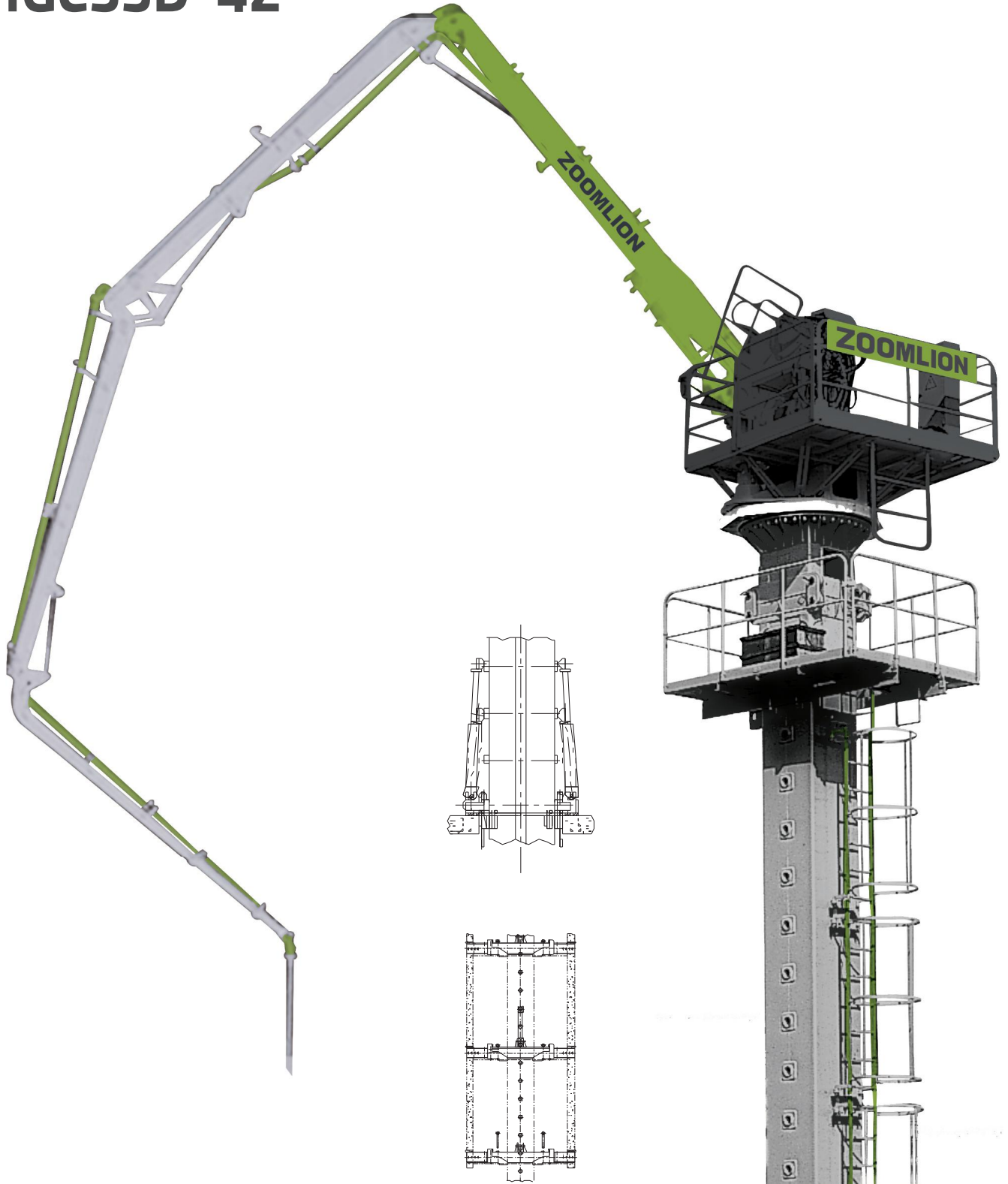




## HGC33D-4Z



Automatic Climbing System(Choose one)

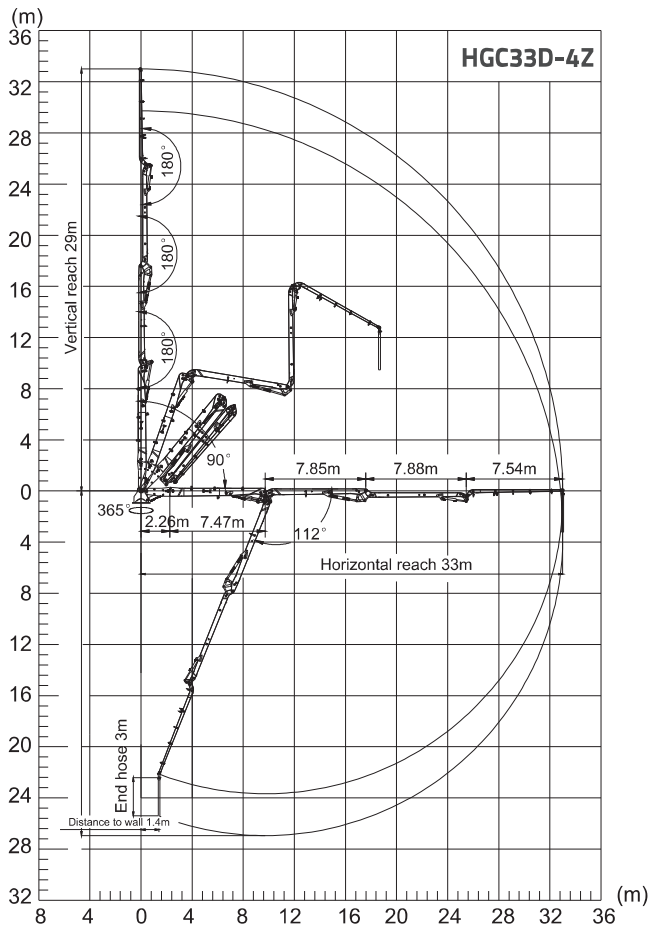


## HGC33D-4Z

### Main features

ZOOMLION placing boom provides professional solutions for high buildings and large-scale constructions.

- Wide application: HGC33D-4Z used in free standing or inner climbing to meet various jobsites.
- Precise control and high reliability: HGC33D-4Z is based on ZOOMLION boom design and tower crane design technology, ensuring stable performance of machine. Control of all boom functions and the climbing device via remote control. Electronic-hydraulic proportional control technology enables precise control and convenient operations.
- Flexible and quick setup: with humanized design philosophy, we take every details into consideration to facilitate quick and convenient install and uninstall of the machine.
- Easy climbing operation: climbing is carried out simply and quickly by two lifting cylinders in a convenient method with the help of the hydraulics of the boom unit.



### Technical data

Vertical reach	33m	
Horizontal reach	33m	
Depth of reach	26.3m	
Free standing height	24m	
Arms	4	
Folding system	Z	
Rotation range	365°	
Pipeline	φ 133×4	
End hose length	3m	
Control mode	Remote	
Column mode	0.75m×0.75m	
Climbing mode	Two lifting cylinder	
Column	2 section	3 section
The heaviest single part	5700kg	4200kg
Power input	15kW	
Power supply	380V/50HZ	

Technical data and characteristic subject to modifications without notice.

